

» CARBIDE AND COATINGS

# DRAWING TOOLS

Perfect geometry. Perfect draw.

DURIT



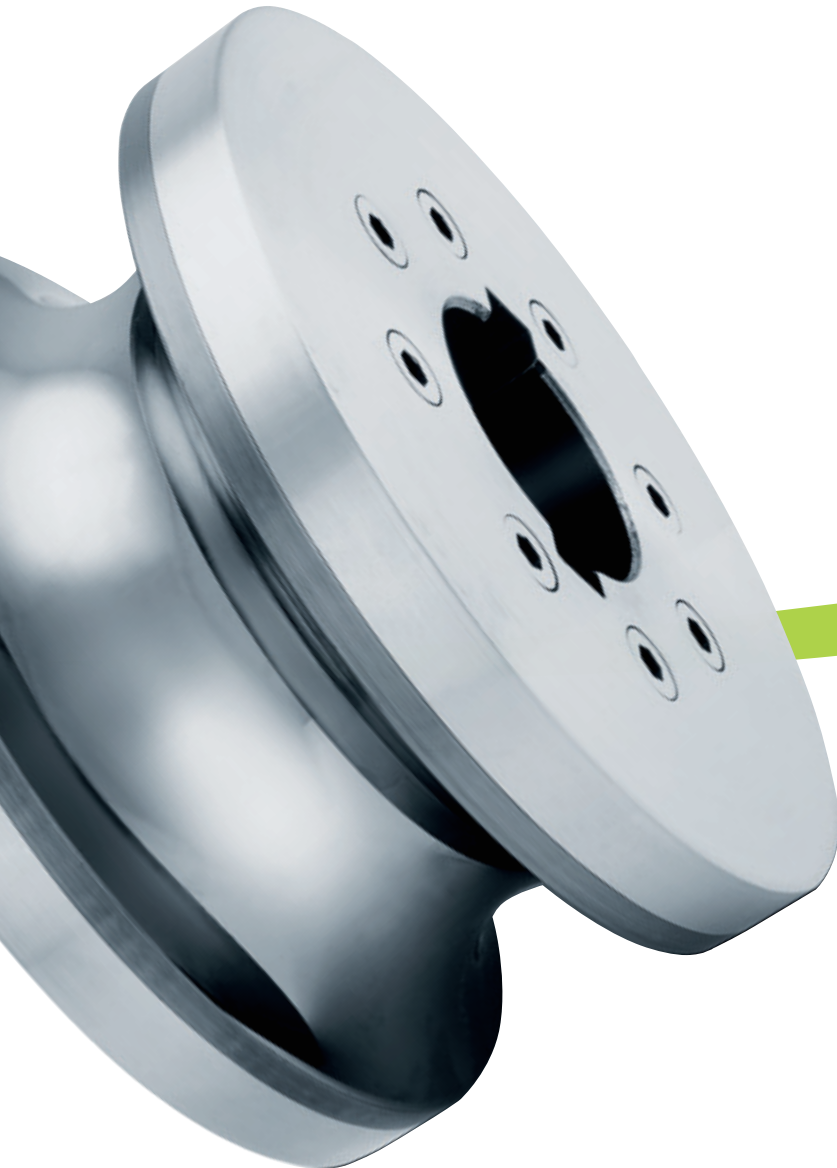
# » CARBIDE TECHNOLOGY

Parts, tools and components made of cemented carbide are **the ultimate in wear resistance and longevity** and **ensure utmost versatility**. DURIT carbide solutions stand up to the toughest demands.

## » DEDICATED TO CARBIDE

**Carbide from a single source**—from blanks to high-precision final products. DURIT produces **customized parts** and realizes **individual shapes** as well as **complex geometries**.

## » WE OFFER FULL-SERVICE CARBIDE



### HARDFACTS

#### » DURIT HARTMETALL

##### » SINCE 1982

Successful and solution-oriented

##### » OVER 500 EMPLOYEES

Worldwide

##### » MORE THAN 60 CARBIDE GRADES

For wear protection and metal forming

##### » 100 % COATING EXPERTISE

HVOF, APS, EAWS, Laser Cladding, PVD and CVD



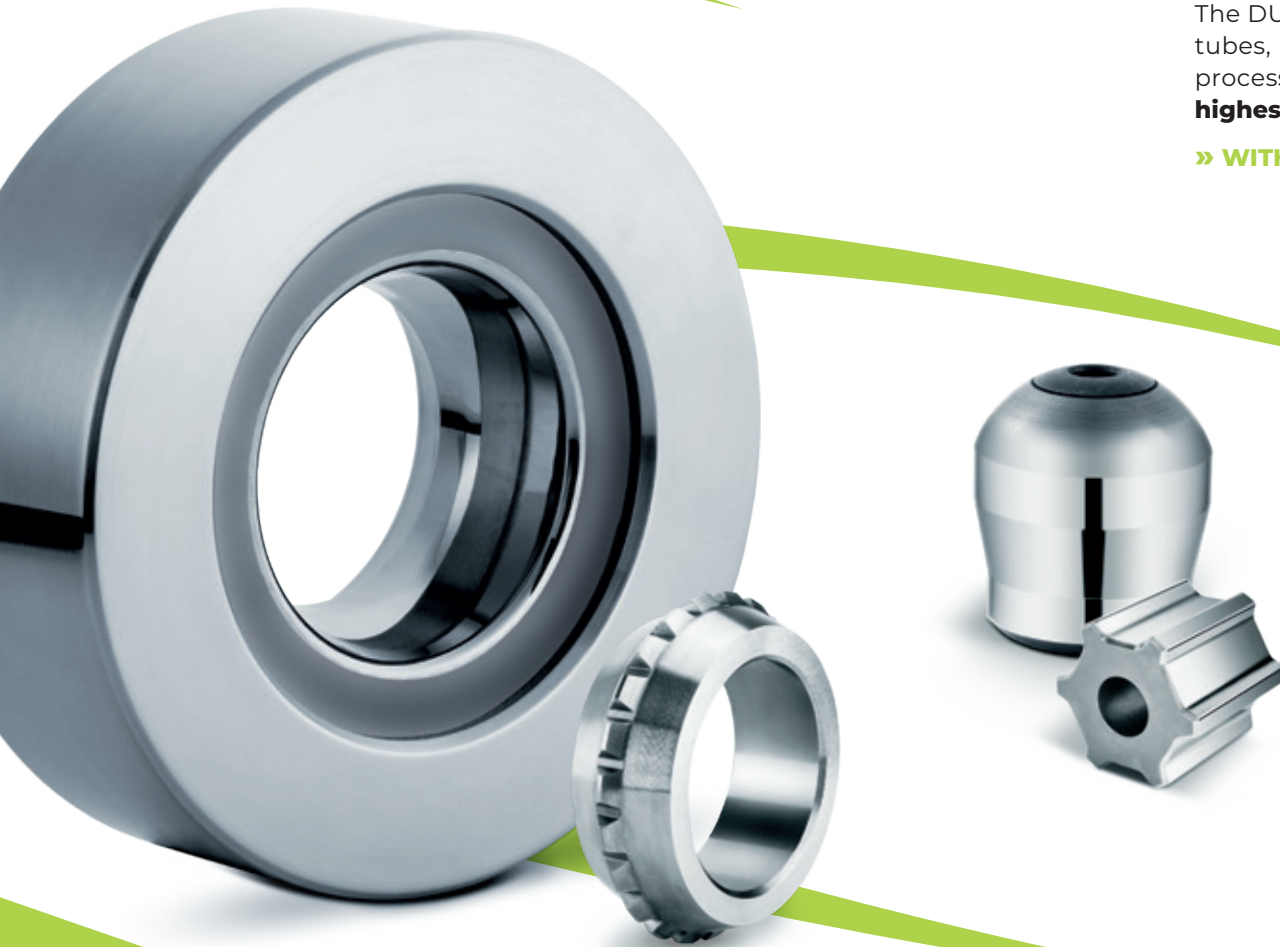
# » WEAR-RESISTANT DRAWING TOOLS

Process-optimized drawing operations place the highest demands on the tools used. With **specific grades of carbide**, DURIT realizes effective solutions that impress with their **durability** and **economy** for high-end drawing operations.

## » WE SOLVE WEAR PROBLEMS

The DURIT product range includes the area of application around drawing of tubes, bars and profiles. With optimally adapted grades for the respective process, our experts create **individual solutions** that permanently meet the **highest requirements**. Effective coatings complete the DURIT portfolio.

## » WITHSTANDS MOST EXTREME DEMANDS



### Products ::

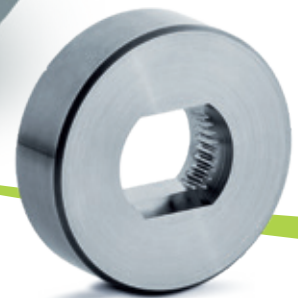
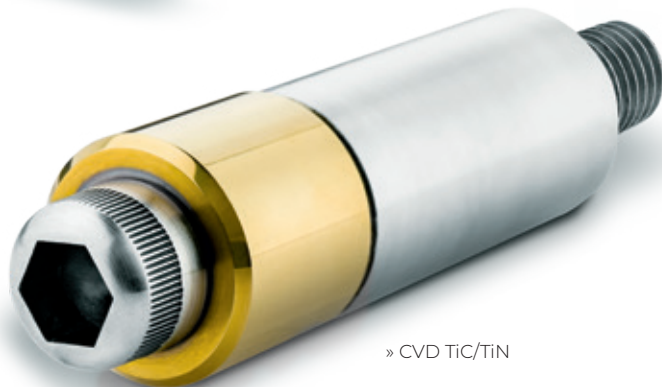
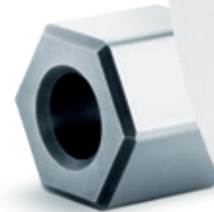
draw rings · nibs · plugs · rotating mandrels · drawing jaws · straightening tools · feed tools · peeling inserts for welded seams · profile tools · sizing rolls · flat rollers · profile rollers · guides · expansion pins

### Typical applications ::

tube and bar drawing · cold rolling technology as well as processing industries

## Selection of application-specific carbide grades ::

GRADE	Composition	Binder (%)	Grain size	Hardness (HV30)	Fracture toughness (MPa·m <sup>1/2</sup> )
GD03F	WC-Co	5,75	submicron	1850	9
GD08F	WC-Co	8,00	submicron	1625	10
GD13F	WC-Co	10,00	submicron	1540	12
GD16F	WC-Co	13,00	submicron	1390	13
GD18F	WC-Co	15,00	submicron	1285	14
GD05	WC-Co	5,50	fine	1700	10
GD10	WC-Co	6,00	medium	1600	10
GD15	WC-Co	8,00	medium	1460	12
GD20	WC-Co	10,00	medium	1350	15
GD30	WC-Co	15,00	medium	1150	15,5



» CVD TiC/TiN

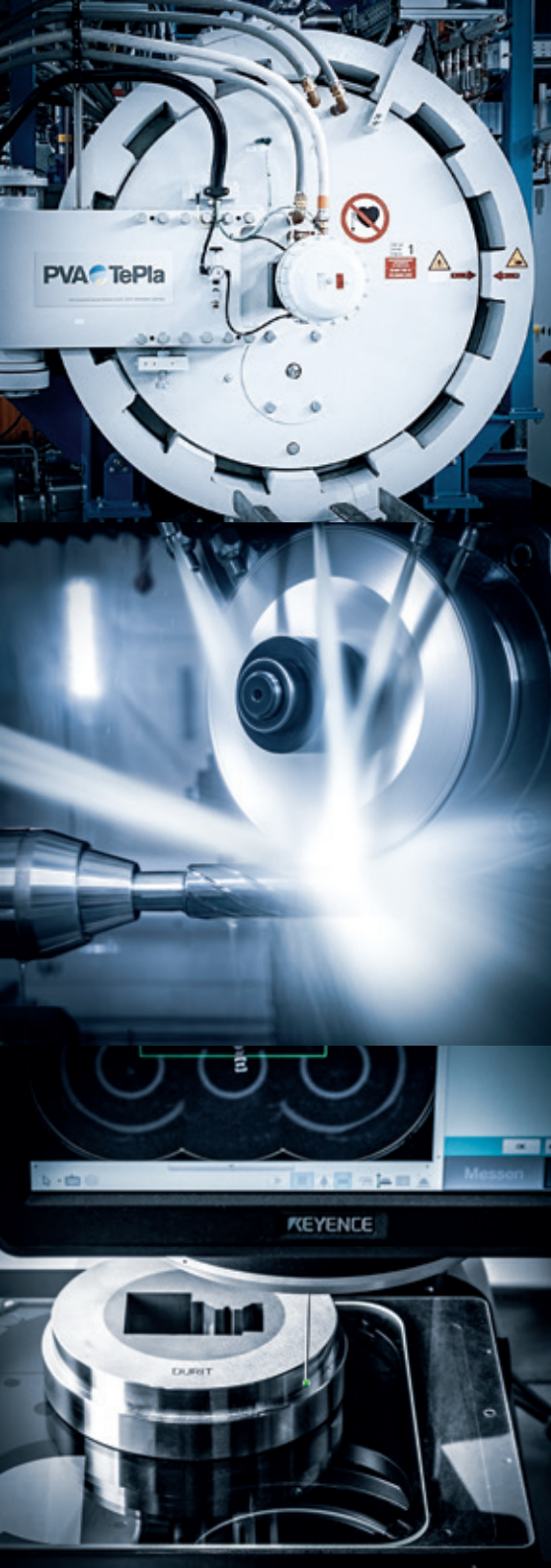
# » DURIT QUALITY REPRESENTS BEST RESULTS

As one of few **complete suppliers in the market**, DURIT offers an all-encompassing concept from consultation, development and design, all the way to production of highly accurate components.

## » CARBIDE FROM A SINGLE SOURCE

Our products are designed with a focus on **dimensional accuracy, continuity** and **value enhancement**. Therefore, all our production sites are equipped with **state-of-the-art** technology. In particular, we attach great importance to our **process-oriented quality management**.

## » QUALITY AND ADDED VALUE THROUGH CERTIFIED PROCESSES



» PVD HardSilk®



» CVD TIC/TIN



» PVD UltraImpact EXCELL®

» **DURIT METALURGIA PORTUGUESA  
DO TUNGSTÊNIO, LDA.**

Zona Industrial – Arruamento C  
3854-184 Albergaria-a-Velha  
Portugal  
T +351 234 529 810  
comercial@durit.pt

[durit.com/pt](http://durit.com/pt)

» **DURIT IBÉRICA, S.L.**

Calle Rozabella 6, EDIF. París  
1A Planta, Oficina 20  
28290 Las Rozas de Madrid  
España  
T +34 916 400 911  
duritiberica@durit.es

[durit.com/es](http://durit.com/es)

» **DURIT BRASIL LTDA**

Via de Penetração III, 519  
Centro Industrial de Aratu  
43700-000 Simões Filho/Bahia  
Brazil  
T +55 71 2106-0544  
comercial@durit.com.br

[durit.com.br](http://durit.com.br)

» **DURIT HARTMETALL GMBH**

Linderhauser Straße 139  
D-42279 Wuppertal  
Germany  
T +49 202 55 109 0  
F +49 202 55 109 25  
info@durit.de

[durit.com](http://durit.com)

**takes you to EXTREMES**

